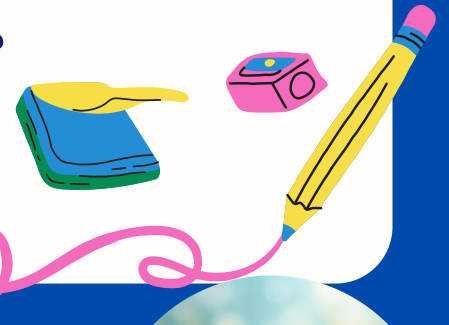




Clifton Primary School Newsletter



02/04/2026



Clubs for next half term

Monday: KS2 Art/Craft Club, KS1 Games Club, KS2 Girls Football

Tuesday: Y5&Y4 Boys Football, KS2 Cricket, Y6 Boosters (invitations to follow)

Thursday: Y5&Y6 Flag Football, KS2 Dance, KS2 Games Club

Friday: Choir (Lunchtime)



Spring term to Summer!



My first full term at Clifton is almost over and I have to say it has been a complete and utter pleasure getting to know our families and children.

Moving forward, I will be acting on any feedback and suggestions from the parent voice survey that was distributed at Parent Teacher meetings. Thank you to those of you who took the time to complete the survey as we truly value your thoughts and opinions.

I would also like to take this time to remind you that we are seeking nominations for a Parent Governor as part of the school's governing body. If you are interested, you have until Thursday, April 23rd to submit your nomination.

Nomination forms are available from the school office.

Finally, can I wish all our families who are celebrating a very Happy Easter!

I can't wait to see you all again after the break. School will re-open on Monday, 20th April.



clifton_sch



Clifton Primary

How many rabbits can you find on this newsletter?



Attendance and Heroes

Nationally average attendance stands at: **94.1%**

Overall whole school attendance stands at: **92.5% (+0.1%)**

This week whole school attendance was: **91.9%**

Class attendances for this TERM:

1C: 84.9% 1/2L: 89.9% 2I: 93.9%

3/4F: 92.7% 3/4T: 95.1% 3/4O: 95.6%

5/6N: 94.9% 5/6P: 95.3% 5/6S: 92.7%

Our Attendance Heroes this week are:

Oak: Grayson Elm: Bonnie 1C: 1/2L: Francesca 2I: Rosie W

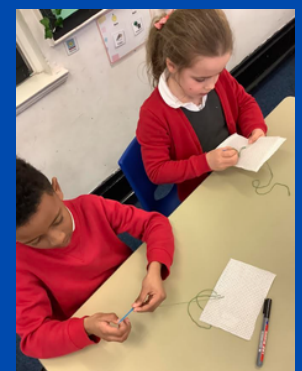
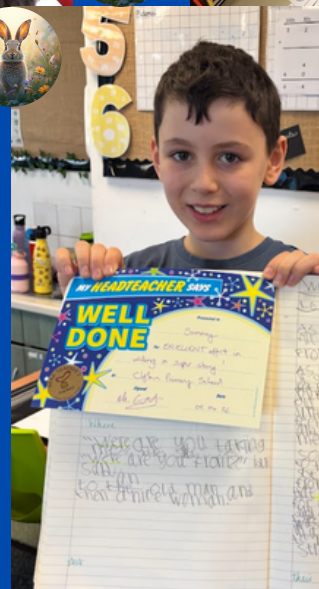
3/4F: Isaiah 3/4T: Bella 3/4O: Evie

5/6N: Bethany 5/6P: Alice L 5/6S: Melina

Owlets: Liam



WE LOVE LEARNING!





PARKING

Please can I ask that if you are parking your car in the streets around school at drop-off and pick-up times that you park considerately. Our neighbours are very tolerant but are having their driveways blocked. I am sure that most of us wouldn't appreciate that either. I know you might think that it's only a couple of minutes but it might be the case that they need to get out of their driveway for work or an emergency.

PLEASE PARK CONSIDERATELY



Parent - Teacher Meetings

Thank you to everyone who attended the parent-teacher meetings this week. We hope you found them useful and informative and that you are up to date with your child's progress.

We are continually looking for ways to improve the experience and ensure parents are able to get the information they want. This time we trialled a shorter meeting and on reflection, we realise that this probably wasn't long enough. Next time we will return to a longer meeting time with a more focused approach.



If you haven't done so already, please complete our online parent voice survey:

<https://forms.gle/sLcbmvghDCQYx25F6>

Bullying

One of the questions on our parent survey refers to 'bullying' and I would like to take this opportunity to clarify what bullying is, what form it can take and what bullying isn't. At Clifton Primary School, we DO NOT tolerate bullying and it is dealt with effectively and in a timely manner.

What is bullying? Bullying is the repetitive, intentional hurting of one person or group by another person or group, where the relationship involves an imbalance of power.

What form can it take? Bullying can be physical, verbal or psychological. It can happen face-to-face or online.

What isn't bullying? While bullying is a serious issue, it's also important to recognise that not all conflicts or disagreements between children are bullying. Bullying isn't: falling out with people or friends, short term arguments, a fight between 2 children of equal strength, occasional teasing, bickering etc.

An easy way to remember what bullying is is STOP!

Several
Times
On
Purpose

- Bullying is not just 'banter'.
- Bullying is intentional, it's done on purpose.
- Bullying can happen face to face or online.
- Bullying involves an imbalance of power.
- Bullying is repetitive - it happens again and again.